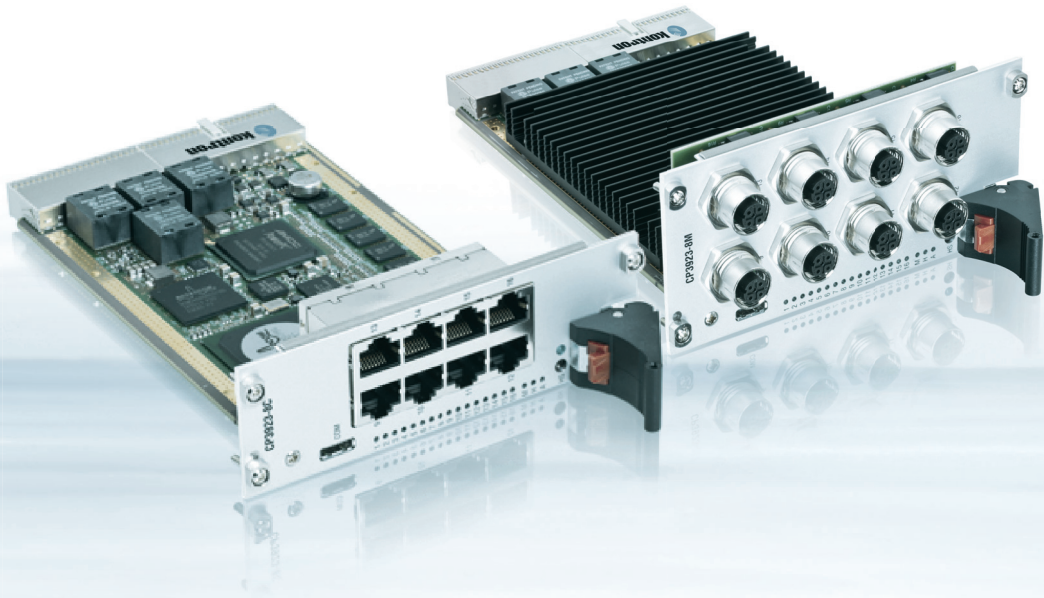


CP3923



UP TO 16-PORT LAYER2/LAYER3 3U CompactPCI SWITCH

- ▶ fully managed layer2 and layer3 switching and routing
- ▶ leading edge technology based on BCM56226
- ▶ front panel design with RJ45 or M12 connectors
- ▶ rugged air-cooled or conductive-cooled versions available

POSSIBILITIES START HERE



kontron

CP3923

UP TO 16-PORT LAYER2/LAYER3 3U CompactPCI SWITCH

Welcome the latest member of the 3U CompactPCI switch family – the CP3923. The CP3923 is a fully managed Layer 2/3 Gigabit Ethernet switch offering IPv4/IPv6* routing and full management capabilities. It supports a powerful set of CLI, Telnet, Web and SNMP management interfaces to configure the entire set of protocols and parameters including Layer 2 and Layer 3 (IPv4/IPv6*) protocols, Multicasting, QoS and Security. On top of that, the CP3923 maximizes the reliability of rugged COTS applications by supporting Intelligent Platform Management (IPMI) and hot swap capabilities.

Unique Versatility

Eight GbE ports to the rear and up to 8 GbE ports to the front ensure highest connectivity capabilities. The CP3923 is available with three different front I/O versions: Either with 8 GbE ports via RJ45 (CP3923-8C) or for mobile- and transportation-oriented applications with 4 (CP3923-4M) or 8 (CP3923-8M) Fast Ethernet ports via M12-D connectors. For applications requiring utmost mechanical stability and reliability the CP3923 is also available as rugged, conductive-cooled version (CP3923-RC).

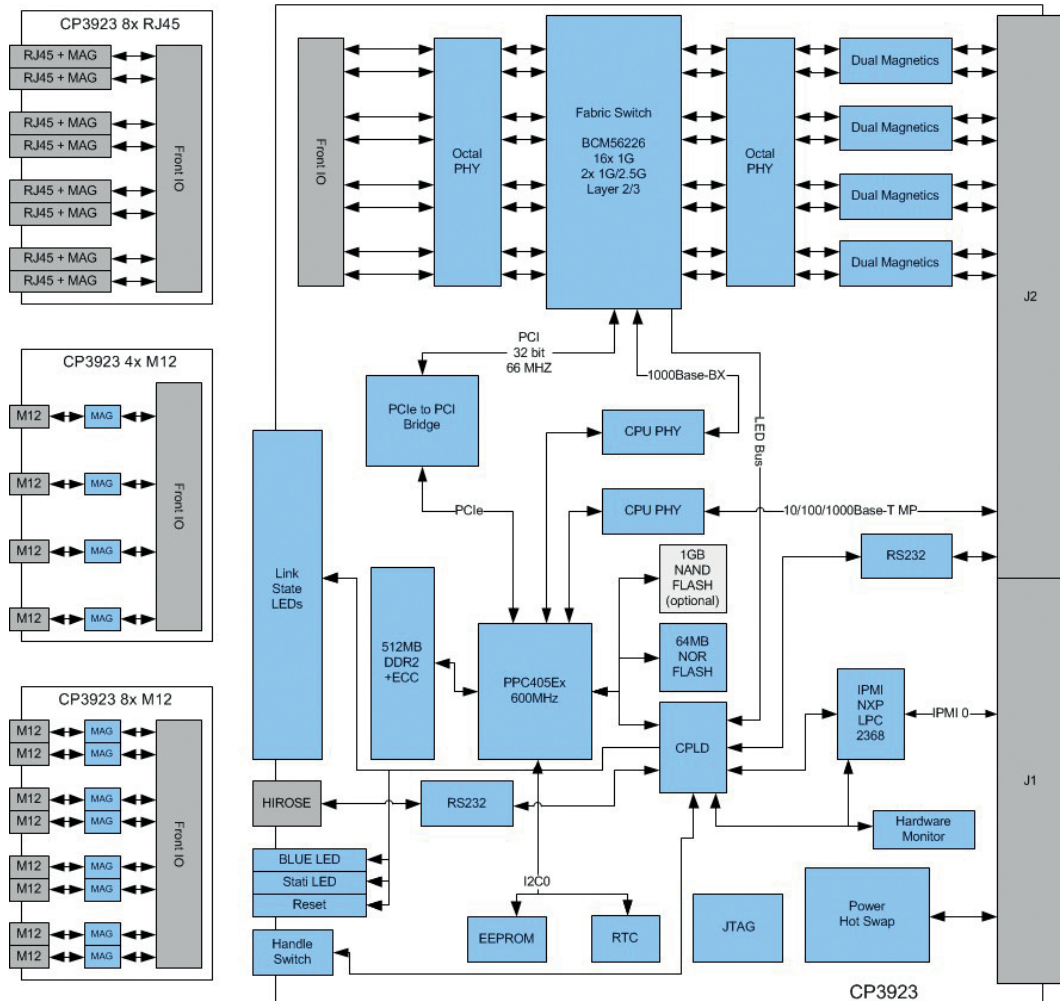
Robust and Reliable

The careful design and selection of high temperature resistant components together with the elaborate heat sink construction ensures high product reliability. Designed with soldered components the CP3923 is able to handle the toughest environmental conditions. With respect to the transportation market the CP3923-4M and the CP3923-8M are fully EN50155 compliant. The CP3923-RC fulfills requirements of the VITA 47 environmental class ECC4.

Long-Term Availability

Based on chosen components from embedded roadmaps, the CP3923 ensures long-term availability and therefore eliminates the risk of unplanned design changes and unexpected application modification.

*IPv6 support optional



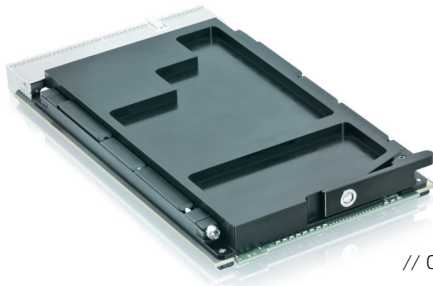
► TECHNICAL INFORMATION

CONTROLLER AND SWITCH		Broadcom BCM56226 Ethernet switch PowerPC® 405EX, 32-bit, RISC processor core operating up to 600 MHz NXP LPC2368 32-bit microcontroller, for IPMI 512MB DDR2 RAM 200 MHz 1GB NAND Flash optionally available
FRONT INTERFACES ON STANDARD BOARDS	COMMON CP3923-8C CP3923-4M CP3923-8M	1x RS232 management port via Hirose connector Reset button Status LEDs, 1x per port Hot swap LED 8x 10/100/1000Base-T ports via RJ45 4x 10/100Base-T ports via M12 D-coded connectors 8x 10/100Base-T ports via M12 D-coded connectors
REAR I/O VIA J2		The CP3923 supports: - Eight Gigabit Ethernet ports - One 10/100/1000Base-T management port - One RS232 management port
COMPACTPCI BUS INTERFACE		PICMG 2.0 Rev. 3.0 compatible, universal 5V and 3.3V PCI signalling voltage supported
HOT SWAP		The board supports full hot swap capability as required by PICMG 2.1 R2.0 It can be removed or inserted in a powered slot, please refer to the PICMG 2.1 R2.0 specification for additional details
COMPLIANCY		CompactPCI® Core Specification PICMG 2.0 Rev. 3.0 CompactPCI® Hot Swap Specification PICMG 2.1 R2.0 CompactPCI® System Management Specification PICMG 2.9 R1.0 Intelligent Platform Management Interface Specification v1.5 IEEE 802.3, 2000 ANSI/Vita 47-2005 Designed to meet or exceed: - Safety: UL 60950-1, CSA 22.2 No 60950-1, EN60950-1 - EMI/EMC: EN 55022 / EN 55024, EN 50081-1 / EN 61000-6-2 - EN50155 (only CP3923-4M and CP3923-8M)
SOFTWARE	MANAGEMENT SWITCHING AND ROUTING	Management via SNMP, Telnet, CLI - In-band - Out-of-band via Ethernet or RS232 IPMI v1.5 Reliable software, field upgradable Dual boot images with roll-back capabilities Advanced management monitoring features Ethernet Bridging: - Static and dynamic link aggregation, Classic, rapid and multiple spanning tree algorithms, Quality Of Service, Full Duplex operation and flow control, Layer 2 multicast services, VLAN support, IGMP and MLP snooping, Access Control Lists IP Routing:(*) - IPv4 Forwarding, ARP, ICMP, static routing, OSPF and RIP routing, Virtual router redundancy protocol (VRRP), ECMP Equal Cost Multipath routing Multicast: - IP Multicasting, IGMPv2 /v3, PIM-DM/PM, DVMRP, MLD v1/v2 Services: - SNTP client, DHCP server, Event Management, POST, SNMP, Support for multiple configurations, TFTP server, Power on and diagnostic tests (*)IPv6 support optional
GENERAL	DIMENSIONS WEIGHT MTBF POWER CONSUMPTION	100 x 160 mm, 3U CP3923-8C: 420g CP3923-4M: 410g CP3923-8M: 500g CP3923-RC: 390g CP3923-8C: 244,715 h acc. to Telcordia Issue 1, Method I Case 3, Ground Benign, controlled at 40°C CP3923-4M: 252,158 h acc. to Telcordia Issue 1, Method I Case 3, Ground Benign, controlled at 40°C CP3923-8M: 246,110 h acc. to Telcordia Issue 1, Method I Case 3, Ground Benign, controlled at 40°C CP3923-RC: 262,140 h acc. to Telcordia Issue 1, Method I Case 3, Ground Benign, controlled at 40°C Typ. 20 W
ENVIRONMENTAL	OPERATING TEMP. STORAGE TEMP. CLIMATIC HUMIDITY	CP3923-8C: -40°C to +85°C, forced system airflow required CP3923-4M/-8M: -40°C to +70°C, EN50155 TX CP3923-RC: -40°C to +85°C, conduction-cooled -50°C to +105°C 93% RH at 40°C, non-condensing (acc. to IEC 60068-2-78)

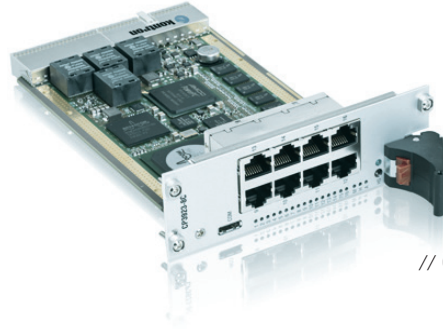
ORDERING INFORMATION

ARTICLE	DESCRIPTION
SWITCH	
CP3923-8C-E2	3U 8HP L2/L3 managed 16-port Switch, 8x GbE front (RJ45), 8x GbE rear, RS232 and GbE management ports, extended temperature range E2
CP3923-8C-E2-C	3U 8HP L2/L3 managed 16-port Switch, 8x GbE front (RJ45), 8x GbE rear, RS232 and GbE management ports, extended temperature range E2, with conformal coating
CP3923-4M-EX-C	3U 8HP L2/L3 managed 12-port Switch, 4x Fast Ethernet front (M12), 8x GbE rear, RS232 and GbE management ports, extended temperature range TX, with conformal coating
CP3923-8M-EX-C	3U 12HP L2/L3 managed 16-port Switch, 8x Fast Ethernet front (M12), 8x GbE rear, RS232 and GbE management ports, extended temperature range TX, with conformal coating
CP3923-RC-E2-C	3U 4HP conductive-cooled L2/L3 managed 8-port Switch, 8x GbE rear, RS232 and GbE management ports, extended temperature range E2, with conformal coating
REAR TRANSITION MODULE	
CP-RI03-923-8C	8HP rear I/O module, 8x GbE (RJ45), RS232 and GbE management ports (RJ45)
CABLE FOR SWITCH CONFIGURATION (VIA FRONT PORT)	
CABLE-SERIAL-10-PIN-MINI-TO-9-PIN-DSUB	Serial adapter cable 10-pin mini to 9-pin D-Sub

Notes: - All versions optionally available with IPv6 (Add suffix -ENH to model number to indicate IPv6 option)
 - Please contact your local sales representative for further assistance concerning configuration options



// CP3923-RC



// CP3923-8C



// CP3923-8M



// CP3923-4M

CORPORATE OFFICES

EUROPE, MIDDLE EAST & AFRICA

Lise-Meitner-Str. 3-5
 86156 Augsburg
 Germany
 Tel.: +49 821 4086 0
 Fax: +49 821 4086 111
 info@kontron.com

NORTH AMERICA

14118 Stowe Drive
 Poway, CA 92064-7147
 USA
 Tel.: +1 888 294 4558
 Fax: +1 858 677 0898
 info@us.kontron.com

ASIA PACIFIC

1-2F, 10 Building, No. 8 Liangshuihe 2nd Street,
 Economical & Technological Development Zone,
 Beijing, 100176, P.R.China
 Tel.: +86 10 63751188
 Fax: +86 10 83682438
 info@kontron.cn